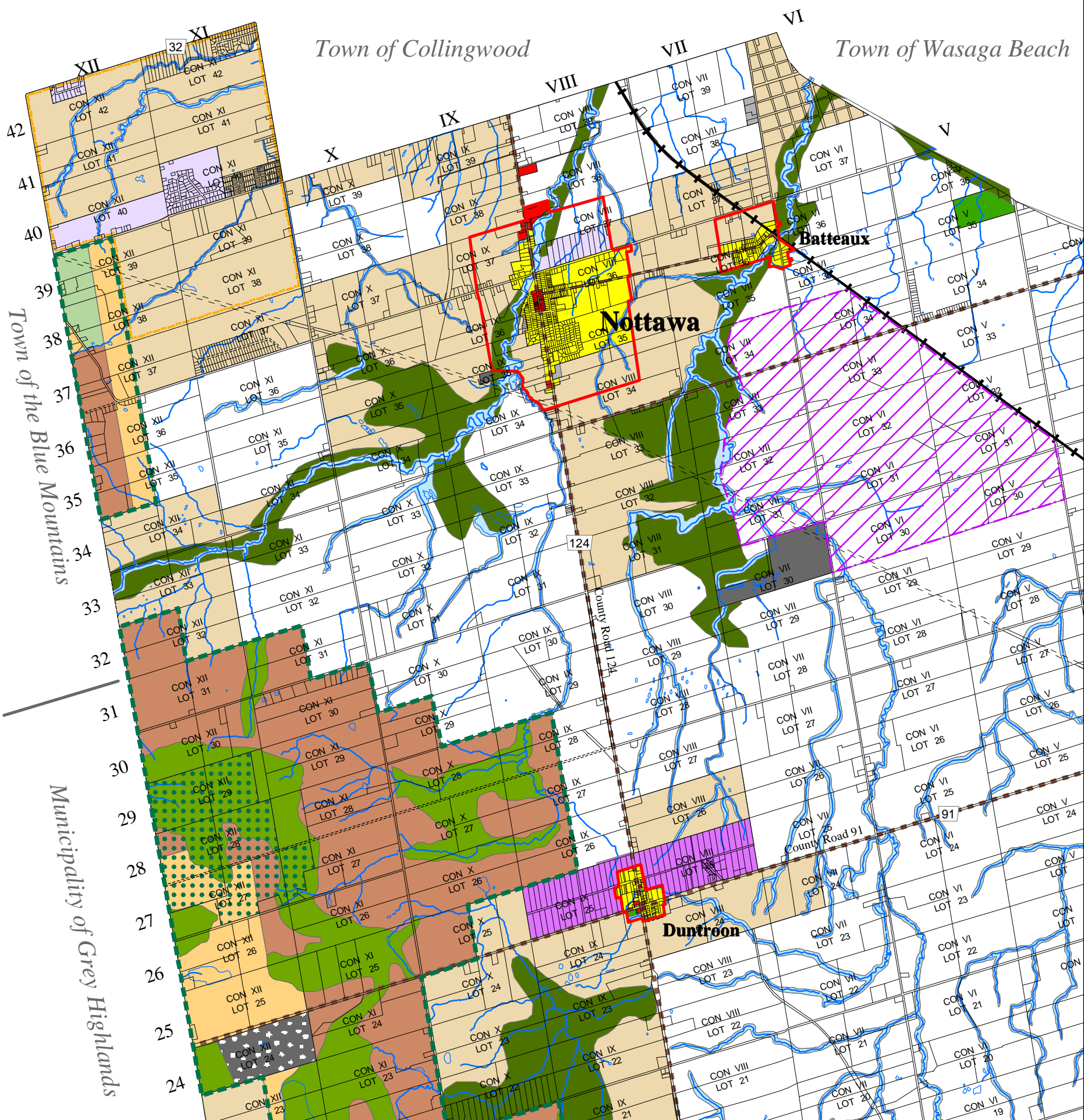
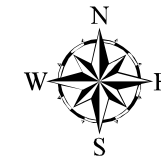




OFFICIAL PLAN of the TOWNSHIP OF CLEARVIEW

Schedule A - Map 1 - North West Land Use and Transportation Plan



Land Use - General

- Greenland - Hazard Land Areas
- Greenland - Natural Heritage Areas
- Greenland - Wetland Areas
- Open Space
- Agriculture
- Rural

- Residential
- Estate Residential
- Special Policy Residential
- Future Development
- Commercial
- Commercial Transition Area
- Future Commercial

- Extractive Industrial
- Industrial
- Mineral Aggregate Resource Area
- Waste Disposal Industrial

Land Use - Niagara Escarpment Plan Area

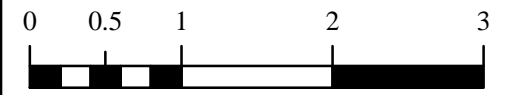
- Escarpment Natural Area
- Escarpment Protection Area
- Escarpment Recreation Area
- Escarpment Rural Area
- Mineral Resource Extraction Area
- Public Land in the Parks System

Boundary Classifications

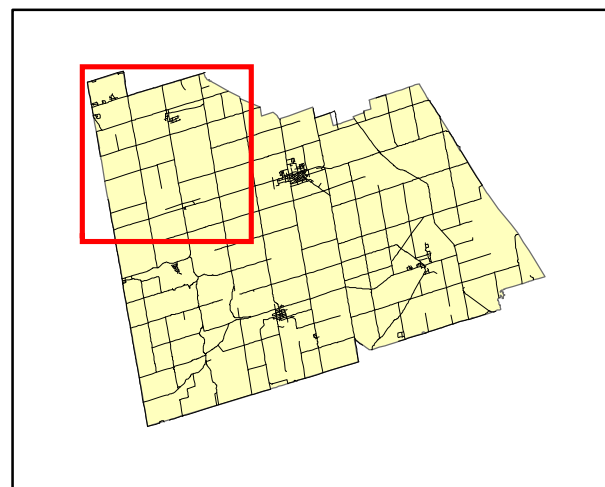
- Waste Disposal Assessment Area
- Boundary of the Niagara Escarpment Plan
- Special Development Area - Collingwood Airport
- Urban Settlement Area Boundary
- Special Servicing Area
- Recreational District

Transportation

- Provincial Highways
- Arterial Roads
- Collector Roads
- Local Roads
- Railway Lands / Water Transmission Line



Kilometers
1 centimeter equals 500 meters



Projection: Universal Transverse Mercator
Mapping Date: 21 March, 2002

Parcel and hydrological data provided by
Simcoe County
Land Information Network Co-Operative.

NOTE: This map is not a legal survey.