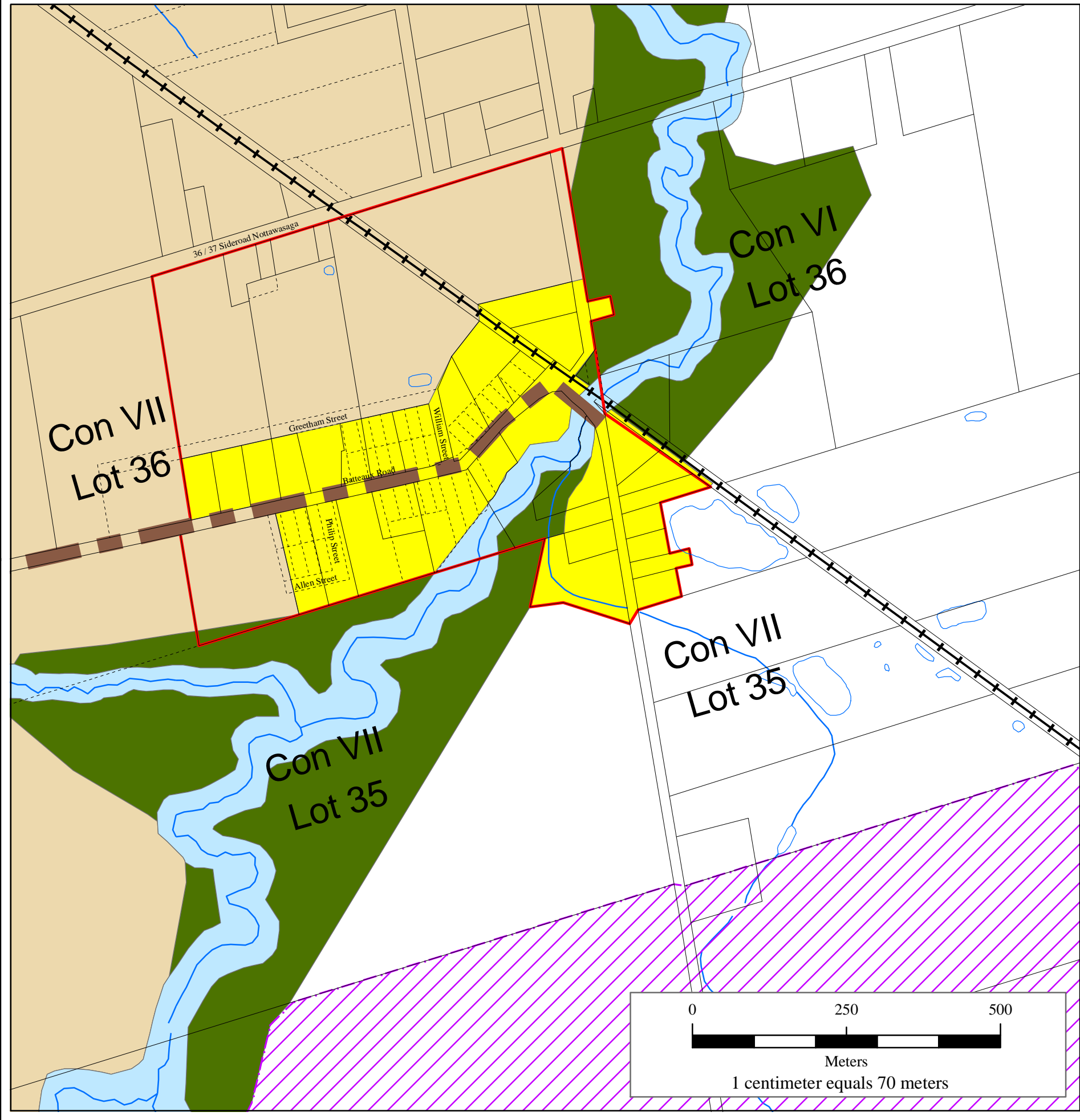
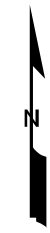


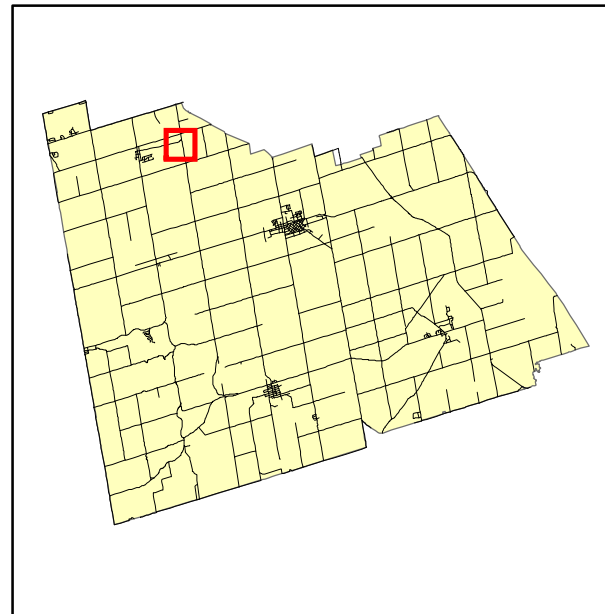
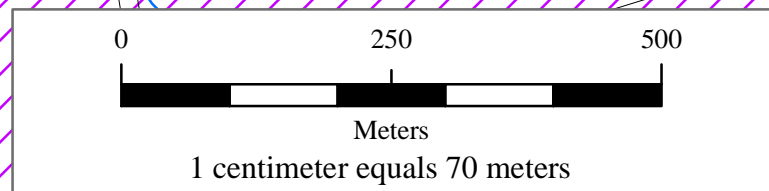


OFFICIAL PLAN of the TOWNSHIP OF CLEARVIEW

Schedule A11 - Batteaux Land Use and Transportation Plan Secondary Urban Settlement Area



Land Use - General		Land Use - Niagara Escarpment Plan Area	
	Greenland - Hazard Land Areas		Escarpment Natural Area
	Greenland - Natural Heritage Areas		Escarpment Protection Area
	Greenland - Wetland Areas		Escarpment Recreation Area
	Open Space		Escarpment Rural Area
	Agriculture		Mineral Resource Extraction Area
	Rural		Public Land in the Parks System
Boundary Classifications			
	Waste Disposal Assessment Area		Boundary of the Niagara Escarpment Plan
	Special Development Area - Collingwood Airport		Urban Settlement Area Boundary
	Commercial		Special Servicing Area
	Commercial Transition Area		Recreational District
	Future Commercial	Transportation	
	Residential		Provincial Highways
	Estate Residential		Arterial Roads
	Special Policy Residential		Collector Roads
	Future Development		Local Roads
	Commercial		Railway Lands / Water Transmission Line
	Commercial Transition Area		
	Future Commercial		
	Extractive Industrial		
	Industrial		
	Mineral Aggregate Resource Area		
	Waste Disposal Industrial		



Projection: Universal Transverse Mercator
Mapping Date: 21 March, 2002

Parcel and hydrological data provided by
Simcoe County
Land Information Network Co-Operative.

NOTE: This map is not a legal survey.