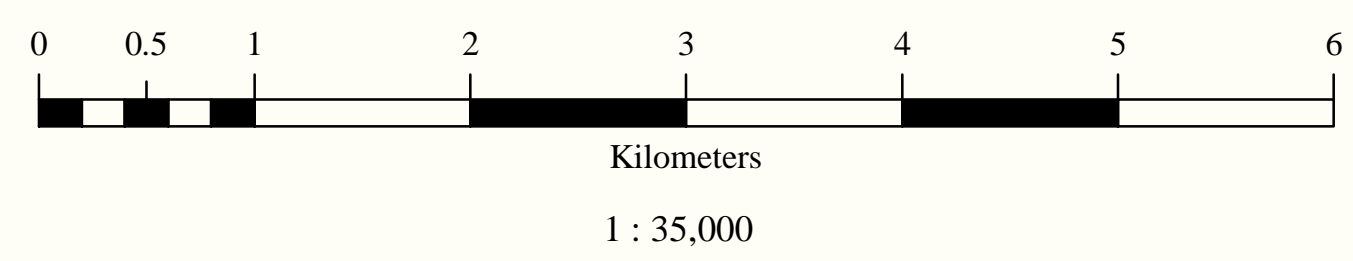
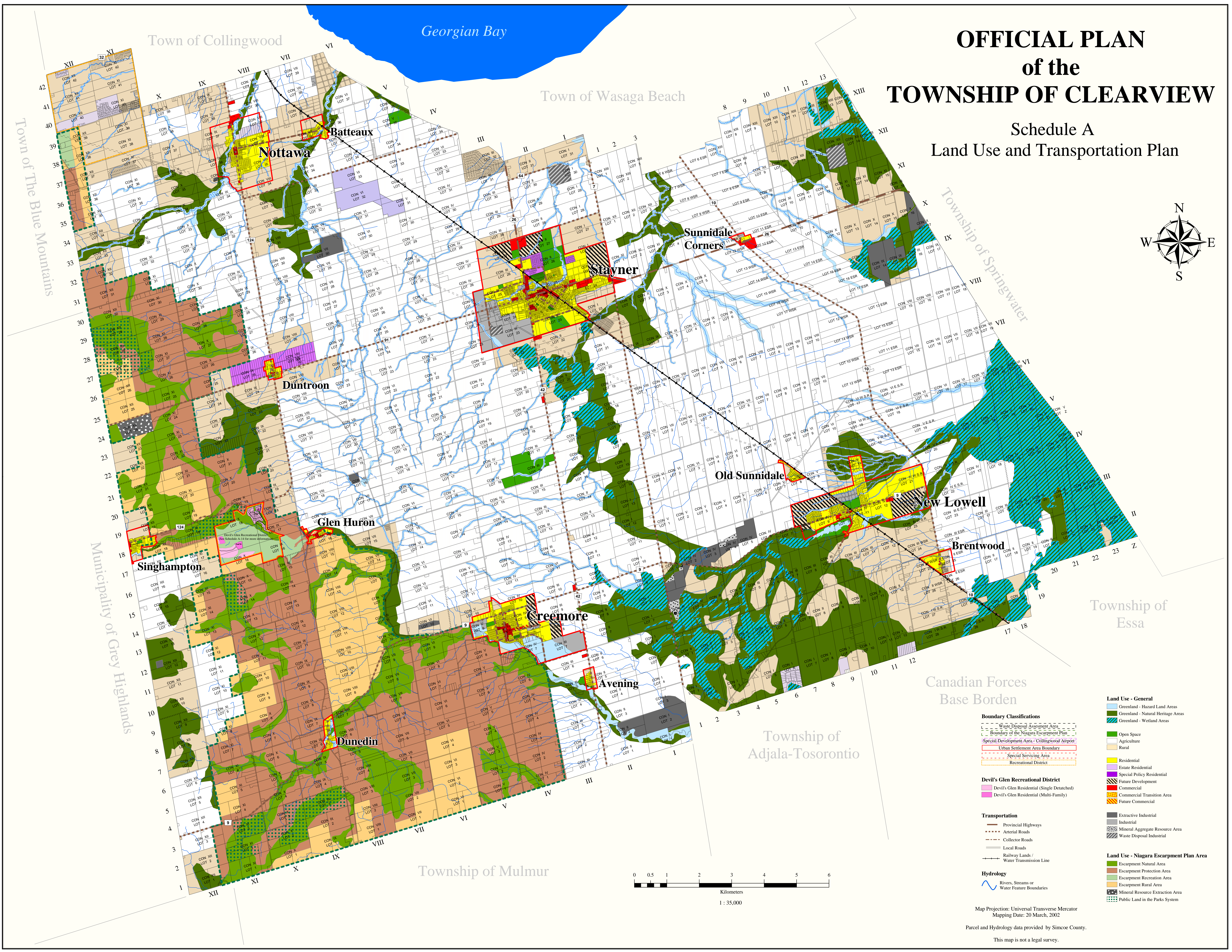
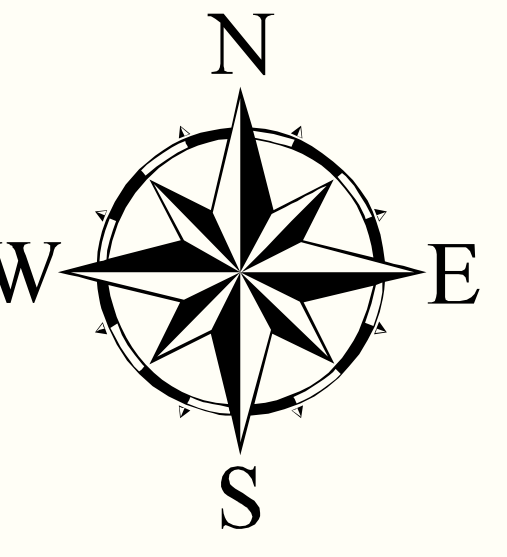


OFFICIAL PLAN of the TOWNSHIP OF CLEARVIEW

Schedule A Land Use and Transportation Plan



- Land Use - General**
- Greenland - Hazard Land Areas
 - Greenland - Natural Heritage Areas
 - Greenland - Wetland Areas
 - Open Space
 - Agriculture
 - Rural
 - Residential
 - Estate Residential
 - Special Policy Residential
 - Future Development
 - Commercial
 - Commercial Transition Area
 - Future Commercial
 - Extractive Industrial
 - Industrial
 - Mineral Aggregate Resource Area
 - Waste Disposal Industrial
- Land Use - Niagara Escarpment Plan Area**
- Escarpment Natural Area
 - Escarpment Protection Area
 - Escarpment Recreation Area
 - Escarpment Rural Area
 - Mineral Resource Extraction Area
 - Public Land in the Parks System
- Boundary Classifications**
- Waste Disposal Assessment Area
 - Boundary of the Niagara Escarpment Plan
 - Special Development Area - Collingwood Airport
 - Urban Settlement Area Boundary
 - Special Servicing Area
 - Recreational District
- Devil's Glen Recreational District**
- Devil's Glen Residential (Single Detached)
 - Devil's Glen Residential (Multi-Family)
- Transportation**
- Provincial Highways
 - Arterial Roads
 - Collector Roads
 - Local Roads
 - Railway Lands / Water Transmission Line
- Hydrology**
- Rivers, Streams or Water Feature Boundaries
- Map Projection: Universal Transverse Mercator
Mapping Date: 20 March, 2002
Parcel and Hydrology data provided by Simcoe County.
This map is not a legal survey.